



# ECONOMIC INDICATORS

NEW SOUTH WALES

EMBARGO: 11:30AM (CANBERRA TIME) MON 15 FEB 1999

## C O N T E N T S

|   | <i>page</i> |
|---|-------------|
| Notes . . . . .                               | 2           |
| NSW Overview . . . . .                        | 3           |
| Main features . . . . .                       | 4           |
| List of tables and graphs . . . . .           | 5           |
| <br>  |             |
| Population . . . . .                          | 6           |
| Labour . . . . .                              | 7           |
| Production . . . . .                          | 10          |
| Building . . . . .                            | 11          |
| Retail trade . . . . .                        | 12          |
| New motor vehicle registrations . . . . .     | 13          |
| Tourism . . . . .                             | 14          |
| Consumer and producer price indexes . . . . . | 15          |
| Finance . . . . .                             | 16          |
| State Government finance . . . . .            | 17          |
| Investment . . . . .                          | 18          |
| International trade . . . . .                 | 19          |

- For more information about these and related statistics, contact Bill Markham on (02) 9268 4376 or e-mail [bill.markham@abs.gov.au](mailto:bill.markham@abs.gov.au) or refer to the back cover of this publication.

# NOTES

**GENERAL**

This publication provides information on a wide range of economic indicators which are the latest available at the time of publication. In a number of cases, figures appearing in this summary are preliminary and are subject to revision in subsequent issues.

**SEASONAL  
ADJUSTMENT  
AND TREND  
ESTIMATION**

Seasonal adjustment is a means of removing the estimated effects of normal seasonal variation from a series so that the effects of other variations on that series can be more clearly recognised. Seasonal adjustment does not aim to remove the irregular or non-seasonal influences which may be present. This means that movements of seasonally adjusted estimates may not be reliable indicators of trend behaviour. Smoothing seasonally adjusted series produces a measure of the underlying trend by reducing the impact of the irregular component of the series. This smoothing technique does result in revisions to the most recent estimates as additional observations become available. For an explanation of seasonal adjustment derivation, refer to the publication *Seasonally Adjusted Indicators* (Cat. no. 1308.0).

**STANDARD ERRORS  
OF ESTIMATES**

One measure of the variability which occurs as a result of surveying only samples of the total business population is the standard error. There are about two chances in three that a survey estimate is within one standard error of the figure that would have been obtained if all businesses had been included, and about 19 chances in 20 that it is within two standard errors. The standard error can also be expressed as a percentage of the estimate and this is known as the relative standard error (RSE). For detailed explanatory notes and definitions for the items shown in this publication, readers are referred to the specific ABS publications.

Current publications produced by the ABS are listed in the *Catalogue of Publications* (Cat. no. 1101.0). A *Release Advice* (Cat. no. 1105.0) is issued on Tuesdays and Fridays which lists publications to be released in the next few days. These publications are available from any ABS office.

**SYMBOLS AND  
OTHER USAGES**

.....

|       |   |
|-------|---|
| kWh   | kilowatt hour   |
| teraJ | terajoule   |
| n.a.  | not available   |
| n.p.  | not available for publication but included in totals where applicable                                 |
| n.y.a | not yet available   |
| r     | figure or series revised since previous issue   |
| . .   | not applicable  |
| —     | nil or rounded to zero  |
| —     | break in continuity of series (where a line is drawn across a column between two consecutive figures) |

Gregory W. Bray  
Regional Director  
New South Wales

# NSW OVERVIEW

---

## EMPLOYMENT

Employment rose by 1.5% in NSW in December 1998 to a seasonally adjusted figure of 2,893,800. National employment rose by 0.6% over the month.

## UNEMPLOYMENT

Unemployment in NSW fell by 14.1% in December 1998 to a seasonally adjusted figure of 207,600. The seasonally adjusted unemployment rate in NSW fell from 7.8% in November 1998 to 6.7% in December. Nationally, the unemployment rate fell from 8.0% to 7.5% over this period.

## JOB VACANCIES

There were 24,100 job vacancies in NSW in November 1998, a fall of 8.5% over the last quarter. National job vacancies rose by 6.0% in this period.

## BUILDING APPROVALS

The seasonally adjusted number of new dwelling units approved for NSW in November 1998 increased by 2.9% from the previous month to 4,260.

## RETAIL

In seasonally adjusted terms, total retail sales for NSW in November 1998 was \$4,064.6 million. The figure for October 1998 was \$4,049.2 million.

## NEW MOTOR VEHICLE REGISTRATIONS

New motor vehicle registrations for NSW in seasonally adjusted terms in November 1998 increased 6.8% from the previous month to 23,212.

## FINANCE

The seasonally adjusted value of housing finance for owner occupation in NSW in November 1998 was \$2,005 million. This represented an increase of 5.4% on the previous month and an increase of 10.6% since November 1997.

## TOURISM

Takings from licensed hotels, motels and guest houses and serviced apartments with 15 or more rooms or units for NSW in the September quarter 1998 were \$342.1 million. This represented an increase of 8.0% on the June quarter 1998.

## MAIN FEATURES

---

### BUILDING APPROVALS

In seasonally adjusted terms, the number of new dwelling units approved in NSW for November 1998 was 4,260 (2,316 houses). This represented a rise of 2.9% on the previous month and a fall of 4.7% since November 1997. Nationally, the figure was 12,529 (8,454 houses), representing a slight increase on the previous month but down 5.1% compared to November 1997.

The value of new residential building for NSW in November 1998 was \$521.5 million, a rise of 11.4% on the previous month and up 3.7% on the figure a year ago. Nationally, there was a rise of 3.9% and 4.8% respectively over the same periods.

In original terms, the value of non-residential building for NSW in November 1998 was \$461.9 million, an increase of 47.3% on October 1998. Compared to the figure a year ago (\$380.6 million), there was an increase of 21.4%. The value of total building for NSW in November 1998 was \$1,141.6 million, an increase of 32.4% on the previous month and up 11.1% since November 1997.

### TOURISM

In NSW, the number of room nights occupied in licensed hotels, motels and guest houses and serviced apartments with 15 or more rooms or units in the September quarter 1998 increased 6.5% on the June quarter 1998. Compared to the September quarter 1997, there was an increase of 3.8%. At the national level, the number of room nights occupied increased by 10.5% and 3.5% respectively over the same periods.

In NSW, room occupancy rates for all accommodation types fell by 1.9% to 57.9% compared with September quarter 1997. For the September quarter 1998, room occupancy rates for licensed hotels, motels and guest houses and serviced apartments were 66.5%, 52.4% and 59.2% respectively.

In the Sydney Tourism Region, room occupancy rates also fell for all accommodation types compared with the September quarter 1997. In the September quarter 1998, the room occupancy rate was 66.1%, representing a fall of 5.0% over the year. For the September quarter 1998, room occupancy rates for licensed hotels fell from 71.6% to 69.5%, for motels and guest houses from 64.6% to 59.1% and from 70.6% to 65.5% for serviced apartments.

In NSW, takings from accommodation increased in aggregate for each accommodation type in the September quarter 1998 compared with the September quarter 1997 with an overall increase of 6.2%.

In the Sydney Tourism Region, takings from accommodation increased by 6.4% to \$222.9 million for the September quarter 1998 compared with the September quarter 1997.

# LIST OF TABLES AND GRAPHS

Page

## POPULATION

- 1** Estimated resident population, NSW . . . . . 6

## LABOUR

- 2** Labour data, latest time period, NSW and Australia . . . . . 7  
**3** Labour data, time series, NSW . . . . . 7  
**4** Labour force status of the civilian population, NSW . . . . . 8  
**5** Graph: Unemployment rates, NSW and Australia . . . . . 9

## PRODUCTION

- 6** Coal, electricity and gas production, latest time period, NSW and Australia . . 10  
**7** Coal, electricity and gas production, time series, NSW . . . . . 10

## BUILDING

- 8** Building approvals, latest time period, NSW and Australia . . . . . 11  
**9** Building approvals, time series, NSW . . . . . 11

## RETAIL TRADE

- 10** Turnover of retail establishments, latest time period, NSW and Australia . . . 12  
**11** Turnover of retail establishments, time series, NSW . . . . . 12

## NEW MOTOR VEHICLE REGISTRATIONS

- 12** New motor vehicle registrations, latest time period, NSW and Australia . . . . 13  
**13** New motor vehicle registrations, time series, NSW . . . . . 13

## TOURISM

- 14** Accommodation Establishments, latest time period, NSW and Australia . . . . 14  
**15** Accommodation Establishments, time series, Sydney and NSW. . . . . 14  
**16** Graph: Hotels, motels etc., monthly room occupancy rates,  
 Sydney Tourism Region and NSW. . . . . 14

## CONSUMER AND PRODUCER PRICE INDEXES

- 17** Consumer and producer price indexes, latest time period,  
 NSW and Australia . . . . . 15  
**18** Consumer and producer price indexes, time series, NSW . . . . . 15  
**19** Graph: Consumer Price Index, Sydney and average of 8 capital cities . . . . . 15

## HOUSING FINANCE

- 20** Finance commitments, latest time period, NSW and Australia . . . . . 16  
**21** Finance commitments, time series, NSW . . . . . 16

## STATE GOVERNMENT FINANCE

- 22** Government finance, general government sector, time series, NSW. . . . . 17

## INVESTMENT

- 23** Actual private new fixed capital expenditure, latest time period,  
 NSW and Australia . . . . . 18  
**24** Actual private new fixed capital expenditure, time series, NSW. . . . . 18  
**25** Graph: Actual private new fixed capital expenditure, NSW. . . . . 18

## INTERNATIONAL TRADE

- 26** Imports and exports, latest time period, NSW and Australia . . . . . 19  
**27** Imports and exports, time series, NSW . . . . . 19

# 1

## ESTIMATED RESIDENT POPULATION, NSW

| Period        | Estimated resident population at end of period |                 |                 | Increase during period      |                                 |                           | Mean estimated resident population for year ended |                     |
|---------------|--|-----------------|-----------------|-----------------------------|---------------------------------|---------------------------|---|---------------------|
|               | Males<br>'000                                  | Females<br>'000 | Persons<br>'000 | Natural increase(a)<br>'000 | Net estimated migration<br>'000 | Total increase(b)<br>'000 | 30 June<br>'000                                   | 31 December<br>'000 |
| <b>1995</b>   | 3 064.0  | 3 104.8         | 6 168.8         | 42.0                        | 33.7                            | 75.7                      | 6 093.2   | 6 128.0             |
| <b>1996</b>   | 3 098.9  | 3 143.1         | 6 241.9         | 41.8                        | 31.3                            | 73.1                      | 6 167.2   | 6 204.2             |
| <b>1997</b>   | 3 129.9  | 3 172.6         | 6 302.5         | 41.2                        | 19.3                            | 60.6                      | 6 240.9   | 6 276.1             |
| <b>1997</b>   |  |                 |                 |                             |                                 |                           |   |                     |
| March qtr     | 3 108.8  | 3 152.4         | 6 261.2         | 11.0                        | 8.3                             | 19.3                      | ..  | ..                  |
| June qtr      | 3 114.7  | 3 158.1         | 6 272.8         | 10.7                        | 0.9                             | 11.5                      | ..  | ..                  |
| September qtr | 3 123.3  | 3 165.9         | 6 289.2         | 7.6                         | 8.8                             | 16.4                      | ..  | ..                  |
| December qtr  | 3 129.9  | 3 172.6         | 6 302.5         | 11.9                        | 1.3                             | 13.2                      | ..  | ..                  |
| <b>1998</b>   |  |                 |                 |                             |                                 |                           |   |                     |
| March qtr     | 3 143.1  | 3 184.3         | 6 327.4         | 9.9                         | 15.0                            | 24.9                      | ..  | ..                  |
| June qtr      | 3 150.5  | 3 191.1         | 6 341.6         | 10.2                        | 4.0                             | 14.2                      | ..  | ..                  |

<sup>a</sup> Excess of live births over deaths.

<sup>b</sup> For dates prior to June 1996, differences between the total increase shown and the sum of the natural increase and net estimated migration arise from retrospective adjustments to population estimates (which are made after each Census) to compensate for any intercensal discrepancy. A description of intercensal discrepancy is contained in the ABS information paper Demographic Estimates: Concepts, Sources and Methods (Cat. no. 3228.0).

Source: Australian Demographic Statistics (Cat. no. 3101.0)

## 2

### LABOUR, NSW AND AUSTRALIA

| Indicator   | Unit | Latest period | New South Wales |                            | Australia                            |               |                            |                                      |
|---|------|---------------|-----------------|----------------------------|--------------------------------------|---------------|----------------------------|--------------------------------------|
|   |      |               | Latest figure   | Change from prior period % | Change from same period prior year % | Latest figure | Change from prior period % | Change from same period prior year % |
| Employed persons (seasonally adjusted)  | '000 | Dec 98        | 2 893.8         | 1.5                        | 2.0                                  | 8 691.5       | 0.6                        | 2.1                                  |
| Unemployed persons (seasonally adjusted)  | '000 | Dec 98        | 207.6           | -14.1                      | -8.9                                 | 706.5         | -5.9                       | -7.2                                 |
| Labour force (seasonally adjusted)  | '000 | Dec 98        | 3 101.4         | 0.3                        | 1.2                                  | 9 398.1       | 0.1                        | 1.3                                  |
| Participation rate (seasonally adjusted)  | %    | Dec 98        | 61.7            | 0.2                        | 0.0                                  | 63.2          | 0.0                        | 0.0                                  |
| Unemployment rate (seasonally adjusted)   | %    | Dec 98        | 6.7             | -14.1                      | -9.5                                 | 7.5           | -6.2                       | -8.5                                 |
| Industrial disputes—working days lost   | '000 | Sep 98        | 7.4             | -64.4                      | -67.8                                | 47.8          | -14.5                      | -7.9                                 |
| Job vacancies   | '000 | Nov 98        | 24.1            | -8.5                       | 5.8                                  | 77.4          | 6.0                        | 13.7                                 |
| Average weekly employee earnings—full-time adult ordinary time earnings (seasonally adjusted) | \$   | Aug 98        | 760.9           | 1.8                        | 4.0                                  | 738.4         | 1.8                        | 4.2                                  |

Source: Labour Force, Australia, Preliminary (Cat. no. 6202.0), Job Vacancies and Overtime, Australia (Cat. no. 6354.0), Industrial Disputes, Australia (Cat. no. 6321.0), Average Weekly Earnings, States and Australia (Cat. no. 6302.0)

## 3

### LABOUR, NSW

| Period      | Seasonally adjusted   |                         |                   |                      |                     |  |                    |
|-------------|-----------------------|-------------------------|-------------------|----------------------|---------------------|--|--------------------|
|             | Employed persons '000 | Unemployed persons '000 | Labour force '000 | Participation rate % | Unemployment rate % | Industrial disputes (working days lost) '000 | Job vacancies '000 |
| <b>1997</b> |                       |                         |                   |                      |                     |  |                    |
| October     | 2 787.7               | 244.1                   | 3 031.7           | 61.2                 | 8.1                 | 28.0   | ..                 |
| November    | 2 831.9               | 238.7                   | 3 070.6           | 61.9                 | 7.8                 | 8.1  | 22.8               |
| December    | 2 836.6               | 228.0                   | 3 064.7           | 61.7                 | 7.4                 | 4.8  | ..                 |
| <b>1998</b> |                       |                         |                   |                      |                     |  |                    |
| January     | 2 843.3               | 227.1                   | 3 070.4           | 61.8                 | 7.4                 | 3.3  | ..                 |
| February    | 2 805.4               | 234.5                   | 3 039.9           | 61.1                 | 7.7                 | 9.3  | 23.5               |
| March       | 2 830.3               | 230.7                   | 3 061.0           | 61.5                 | 7.5                 | 19.7   | ..                 |
| April       | 2 850.4               | 220.5                   | 3 070.9           | 61.6                 | 7.2                 | 8.1  | ..                 |
| May         | 2 835.4               | 231.9                   | 3 067.3           | 61.5                 | 7.6                 | 28.1   | 20.5               |
| June        | 2 864.6               | 234.3                   | 3 098.9           | 62.1                 | 7.6                 | 32.1   | ..                 |
| July        | 2 886.7               | 232.9                   | 3 119.6           | 62.4                 | 7.5                 | r10.3  | ..                 |
| August      | 2 839.2               | 235.1                   | 3 074.3           | 61.5                 | 7.6                 | r20.8  | 26.4               |
| September   | 2 892.6               | 229.4                   | 3 122.0           | 62.3                 | 7.3                 | 7.4  | ..                 |
| October     | 2 899.7               | 208.7                   | 3 108.4           | 62.0                 | 6.7                 | n.y.a.                                       | ..                 |
| November    | 2 851.5               | 241.7                   | 3 093.2           | 61.6                 | 7.8                 | n.y.a.                                       | 24.1               |
| December    | 2 893.8               | 207.6                   | 3 101.4           | 61.7                 | 6.7                 | n.y.a.                                       | ..                 |

Source: Labour Force, Australia, Preliminary (Cat. no. 6202.0), Industrial Disputes, Australia (Cat. no. 6321.0), Job Vacancies and Overtime, Australia (Cat. no. 6354.0)

## 4

## LABOUR FORCE STATUS, NSW—ORIGINAL

| Month           | Employed          |         | Unemployed                 |       | Labour force | Not in labour force | Civilian population aged 15 years and over | Unemployment rate(a) | Participation rate(b) |
|-----------------|-------------------|---------|----------------------------|-------|--------------|---------------------|--|----------------------|-----------------------|
|                 | Full-time workers | Total   | Looking for full-time work | Total |              |                     |  |                      |                       |
|                 | '000              | '000    | '000                       | '000  | '000         | '000                | '000                                       | %                    | %                     |
| <b>MALES</b>    |                   |         |                            |       |              |                     |  |                      |                       |
| <b>December</b> |                   |         |                            |       |              |                     |  |                      |                       |
| 1994            | 1 395.8           | 1 558.7 | 140.0                      | 157.8 | 1 716.5      | 624.5               | 2 341.0                                    | 9.2                  | 73.3                  |
| 1995            | 1 440.0           | 1 607.7 | 120.9                      | 136.3 | 1 744.0      | 627.2               | 2 371.1                                    | 7.8                  | 73.6                  |
| 1996            | 1 451.3           | 1 625.7 | 121.3                      | 142.1 | 1 767.8      | 639.5               | 2 407.3                                    | 8.0                  | 73.4                  |
| <b>1997</b>     |                   |         |                            |       |              |                     |  |                      |                       |
| October         | 1 428.1           | 1 595.3 | 121.3                      | 138.9 | 1 734.2      | 698.1               | 2 432.3                                    | 8.0                  | 71.3                  |
| November        | 1 431.3           | 1 615.2 | 119.0                      | 138.1 | 1 753.3      | 681.9               | 2 435.2                                    | 7.9                  | 72.0                  |
| December        | 1 456.8           | 1 637.6 | 116.8                      | 135.1 | 1 772.7      | 665.4               | 2 438.1                                    | 7.6                  | 72.7                  |
| <b>1998</b>     |                   |         |                            |       |              |                     |  |                      |                       |
| January         | 1 441.8           | 1 616.3 | 127.1                      | 141.7 | 1 758.0      | 682.3               | 2 440.3                                    | 8.1                  | 72.0                  |
| February        | 1 431.8           | 1 599.2 | 129.3                      | 150.7 | 1 749.9      | 692.5               | 2 442.4                                    | 8.6                  | 71.6                  |
| March           | 1 432.2           | 1 613.1 | 123.5                      | 140.6 | 1 753.7      | 690.9               | 2 444.6                                    | 8.0                  | 71.7                  |
| April           | 1 441.4           | 1 622.7 | 104.7                      | 122.9 | 1 745.6      | 701.8               | 2 447.3                                    | 7.0                  | 71.3                  |
| May             | 1 434.0           | 1 614.6 | 115.7                      | 133.2 | 1 747.8      | 702.3               | 2 450.1                                    | 7.6                  | 71.3                  |
| June            | 1 443.0           | 1 623.9 | 117.7                      | 134.6 | 1 758.5      | 694.4               | 2 452.9                                    | 7.7                  | 71.7                  |
| July            | 1 463.8           | 1 639.4 | 115.6                      | 128.2 | 1 767.6      | 687.9               | 2 455.5                                    | 7.3                  | 72.0                  |
| August          | 1 422.9           | 1 597.4 | 116.8                      | 136.1 | 1 733.5      | 724.5               | 2 458.1                                    | 7.9                  | 70.5                  |
| September       | 1 464.5           | 1 646.5 | 118.1                      | 135.3 | 1 781.8      | 678.8               | 2 460.6                                    | 7.6                  | 72.4                  |
| October         | 1 459.3           | 1 647.0 | 97.6                       | 111.3 | 1 758.3      | 706.0               | 2 464.4                                    | 6.3                  | 71.3                  |
| November        | 1 440.7           | 1 631.9 | 113.3                      | 130.6 | 1 762.5      | 705.6               | 2 468.1                                    | 7.4                  | 71.4                  |
| December        | 1 467.5           | 1 657.8 | 108.6                      | 122.5 | 1 780.3      | 691.6               | 2 471.9                                    | 6.9                  | 72.0                  |
| <b>FEMALES</b>  |                   |         |                            |       |              |                     |  |                      |                       |
| <b>December</b> |                   |         |                            |       |              |                     |  |                      |                       |
| 1994            | 712.6             | 1 167.7 | 73.6                       | 111.1 | 1 278.8      | 1 147.5             | 2 426.3                                    | 8.7                  | 52.7                  |
| 1995            | 744.6             | 1 224.3 | 65.3                       | 89.2  | 1 313.5      | 1 140.9             | 2 454.4                                    | 6.8                  | 53.5                  |
| 1996            | 746.7             | 1 225.0 | 70.1                       | 102.6 | 1 327.6      | 1 168.3             | 2 495.8                                    | 7.7                  | 53.2                  |
| <b>1997</b>     |                   |         |                            |       |              |                     |  |                      |                       |
| October         | 721.0             | 1 194.1 | 68.1                       | 97.3  | 1 291.5      | 1 230.6             | 2 522.1                                    | 7.5                  | 51.2                  |
| November        | 725.5             | 1 228.3 | 62.1                       | 87.8  | 1 316.1      | 1 208.6             | 2 524.7                                    | 6.7                  | 52.1                  |
| December        | 730.8             | 1 234.9 | 66.3                       | 95.7  | 1 330.6      | 1 196.8             | 2 527.4                                    | 7.2                  | 52.6                  |
| <b>1998</b>     |                   |         |                            |       |              |                     |  |                      |                       |
| January         | 721.4             | 1 185.5 | 71.4                       | 102.6 | 1 288.1      | 1 241.2             | 2 529.3                                    | 8.0                  | 50.9                  |
| February        | 707.1             | 1 189.9 | 72.1                       | 111.7 | 1 301.7      | 1 229.5             | 2 531.1                                    | 8.6                  | 51.4                  |
| March           | 715.8             | 1 217.8 | 73.7                       | 105.3 | 1 323.1      | 1 209.9             | 2 533.0                                    | 8.0                  | 52.2                  |
| April           | 720.0             | 1 226.2 | 63.2                       | 96.2  | 1 322.4      | 1 212.9             | 2 535.3                                    | 7.3                  | 52.2                  |
| May             | 707.9             | 1 220.7 | 68.5                       | 94.0  | 1 314.7      | 1 222.9             | 2 537.7                                    | 7.1                  | 51.8                  |
| June            | 727.3             | 1 242.0 | 57.2                       | 88.3  | 1 330.4      | 1 209.6             | 2 540.0                                    | 6.6                  | 52.4                  |
| July            | 762.9             | 1 255.2 | 59.9                       | 88.7  | 1 344.0      | 1 198.3             | 2 542.3                                    | 6.6                  | 52.9                  |
| August          | 721.7             | 1 216.6 | 62.7                       | 85.2  | 1 301.9      | 1 242.7             | 2 544.5                                    | 6.5                  | 51.2                  |
| September       | 753.6             | 1 271.8 | 62.0                       | 97.4  | 1 369.2      | 1 177.6             | 2 546.8                                    | 7.1                  | 53.8                  |
| October         | 747.7             | 1 254.4 | 55.5                       | 91.0  | 1 345.4      | 1 204.8             | 2 550.1                                    | 6.8                  | 52.8                  |
| November        | 730.1             | 1 231.6 | 61.6                       | 97.8  | 1 329.4      | 1 224.0             | 2 553.4                                    | 7.4                  | 52.1                  |
| December        | 759.6             | 1 273.4 | 57.9                       | 87.4  | 1 360.7      | 1 196.0             | 2 556.8                                    | 6.4                  | 53.2                  |

For footnotes see end of table.



# 4

## LABOUR FORCE STATUS, NSW—ORIGINAL *continued*

| Month           | Employed          |         | Unemployed                 |       | Labour force | Not in labour force | Civilian population aged 15 years and over | Unemployment rate(a) | Participation rate(b) |
|-----------------|-------------------|---------|----------------------------|-------|--------------|---------------------|--|----------------------|-----------------------|
|                 | Full-time workers | Total   | Looking for full-time work | Total |              |                     |  |                      |                       |
|                 | '000              | '000    | '000                       | '000  | '000         | '000                | '000                                       | %                    | %                     |
| PERSONS         |                   |         |                            |       |              |                     |  |                      |                       |
| <b>December</b> |                   |         |                            |       |              |                     |  |                      |                       |
| 1994            | 2 108.4           | 2 726.4 | 213.6                      | 268.9 | 2 995.3      | 1 772.1             | 4 767.4                                    | 9.0                  | 62.8                  |
| 1995            | 2 184.7           | 2 832.0 | 186.2                      | 225.5 | 3 057.5      | 1 768.0             | 4 825.5                                    | 7.4                  | 63.4                  |
| 1996            | 2 197.9           | 2 850.6 | 191.4                      | 244.7 | 3 095.4      | 1 807.8             | 4 903.1                                    | 7.9                  | 63.1                  |
| <b>1997</b>     |                   |         |                            |       |              |                     |  |                      |                       |
| October         | 2 149.1           | 2 789.4 | 189.3                      | 236.2 | 3 025.7      | 1 928.7             | 4 954.3                                    | 7.8                  | 61.1                  |
| November        | 2 156.7           | 2 843.5 | 181.1                      | 225.9 | 3 069.4      | 1 890.5             | 4 959.9                                    | 7.4                  | 61.9                  |
| December        | 2 187.6           | 2 872.6 | 183.1                      | 230.8 | 3 103.3      | 1 862.2             | 4 965.6                                    | 7.4                  | 62.5                  |
| <b>1998</b>     |                   |         |                            |       |              |                     |  |                      |                       |
| January         | 2 163.2           | 2 801.8 | 198.5                      | 244.3 | 3 046.1      | 1 923.5             | 4 969.5                                    | 8.0                  | 61.3                  |
| February        | 2 138.9           | 2 789.1 | 201.4                      | 262.4 | 3 051.5      | 1 922.0             | 4 973.5                                    | 8.6                  | 61.4                  |
| March           | 2 148.0           | 2 830.9 | 197.1                      | 245.8 | 3 076.8      | 1 900.8             | 4 977.5                                    | 8.0                  | 61.8                  |
| April           | 2 161.5           | 2 848.9 | 167.9                      | 219.1 | 3 068.0      | 1 914.7             | 4 982.7                                    | 7.1                  | 61.6                  |
| May             | 2 141.9           | 2 835.3 | 184.2                      | 227.2 | 3 062.5      | 1 925.2             | 4 987.8                                    | 7.4                  | 61.4                  |
| June            | 2 170.3           | 2 865.9 | 174.9                      | 223.0 | 3 088.8      | 1 904.1             | 4 992.9                                    | 7.2                  | 61.9                  |
| July            | 2 226.8           | 2 894.6 | 175.5                      | 216.9 | 3 111.6      | 1 886.2             | 4 997.7                                    | 7.0                  | 63.3                  |
| August          | 2 144.7           | 2 814.1 | 179.5                      | 221.3 | 3 035.4      | 1 967.2             | 5 002.6                                    | 7.3                  | 60.7                  |
| September       | 2 218.1           | 2 918.3 | 180.3                      | 232.7 | 3 151.0      | 1 856.4             | 5 007.4                                    | 7.4                  | 62.9                  |
| October         | 2 207.0           | 2 901.4 | 153.1                      | 202.2 | 3 103.7      | 1 910.8             | 5 014.5                                    | 6.5                  | 61.9                  |
| November        | 2 170.8           | 2 863.5 | 174.9                      | 228.4 | 3 092.0      | 1 929.6             | 5 021.6                                    | 7.4                  | 61.6                  |
| December        | 2 227.2           | 2 931.2 | 166.5                      | 209.9 | 3 141.0      | 1 887.6             | 5 028.7                                    | 6.7                  | 62.5                  |

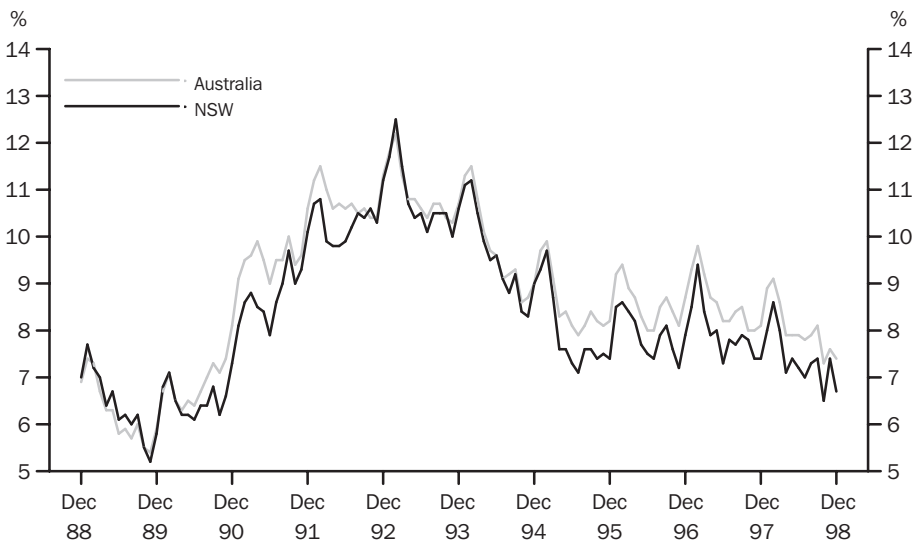
<sup>a</sup> The number of unemployed in each group expressed as a percentage of the labour force in the same group.

<sup>b</sup> The labour force in each group expressed as a percentage of the civilian population aged 15 years and over in the same group.

Source: Labour Force, Australia, Preliminary (Cat. no. 6202.0)

# 5

## UNEMPLOYMENT RATE—ORIGINAL



Source: Labour Force, Australia, Preliminary (Cat. no. 6202.0).

## 6

## COAL, ELECTRICITY AND GAS PRODUCTION, NSW AND AUSTRALIA—ORIGINAL

| Indicator     | Unit        | Latest period | New South Wales |                          |                                    |               | Australia                |                                    |  |
|---------------|-------------|---------------|-----------------|--------------------------|------------------------------------|---------------|--------------------------|------------------------------------|--|
|               |             |               | Latest figure   | Change from prior period |                                    | Latest figure | Change from prior period |                                    |  |
|               |             |               |                 | %                        | Change from same period prior year |               | %                        | Change from same period prior year |  |
| Raw coal won— |             |               |                 |                          |                                    |               |                          |                                    |  |
| Underground   | '000 tonnes | Oct 98        | 4 620           | -6.6                     | 10.6                               | 5 806         | -8.1                     | 4.8                                |  |
| Open cut      | '000 tonnes | Oct 98        | 6 773           | 3.3                      | 5.2                                | 15 123        | 5.3                      | -0.8                               |  |
| Total         | '000 tonnes | Oct 98        | 11 393          | -1.0                     | 7.3                                | 20 930        | 1.2                      | 0.7                                |  |
| Electricity   | mill. kWh   | Dec qtr 98    | 15 227          | -8.0                     | 0.0                                | 43 235        | -6.2                     | 0.2                                |  |
| Gas(a)        | teraJ       | Dec qtr 98    | 25 039          | -22.4                    | -1.6                               | 157 436       | -17.5                    | 4.0                                |  |

<sup>a</sup> Available for issue through mains. Includes ACT.

Source: Joint Coal Board, Manufacturing Production, Australia (Cat. no. 8301.0)

## 7

## COAL, ELECTRICITY AND GAS PRODUCTION, NSW—ORIGINAL

| Period         | Raw coal won |             |             | Electricity | Gas(a)  |
|----------------|--------------|-------------|-------------|-------------|---------|
|                | Underground  | Open cut    | Total       |             |         |
|                | '000 tonnes  | '000 tonnes | '000 tonnes |             |         |
| <b>1995-96</b> | 54 314       | 58 775      | 113 089     | 62 047      | 104 141 |
| <b>1996-97</b> | 54 643       | 69 037      | 123 680     | 62 788      | 109 284 |
| <b>1997-98</b> | 58 249       | 75 049      | 133 298     | 61 804      | 111 665 |
| <b>1997</b>    |              |             |             |             |         |
| October        | 4 498        | 6 716       | 11 215      | 15 220      | 25 445  |
| November       | 4 253        | 6 083       | 10 336      |             |         |
| December       | 4 090        | 5 997       | 10 087      |             |         |
| <b>1998</b>    |              |             |             |             |         |
| January        | 5 292        | 6 463       | 11 755      | 14 390      | 22 521  |
| February       | 4 553        | 5 948       | 10 501      |             |         |
| March          | 4 437        | 5 800       | 10 237      |             |         |
| April          | 5 160        | 7 052       | 12 212      | 15 561      | 29 614  |
| May            | 4 648        | 5 851       | 10 499      |             |         |
| June           | 4 842        | 6 811       | 11 653      |             |         |
| July r         | 5 159        | 7 241       | 12 400      | 16 543      | 32 258  |
| August         | 4 787        | 5 616       | 10 404      |             |         |
| September r    | 4 792        | 6 372       | 11 164      |             |         |
| October        | 4 620        | 6 773       | 11 393      | 15 227      | 25 039  |
| November       | n.y.a.       | n.y.a.      | n.y.a.      |             |         |
| December       | n.y.a.       | n.y.a.      | n.y.a.      |             |         |

<sup>a</sup> Available for issue through mains. Includes ACT.

Source: Joint Coal Board, Manufacturing Production, Australia (Cat. no. 8301.0)

## 8

## BUILDING APPROVALS, NSW AND AUSTRALIA

| Indicator   | Unit | Latest period | New South Wales |                            |                                      | Australia     |                            |                                      |
|---|------|---------------|-----------------|----------------------------|--------------------------------------|---------------|----------------------------|--------------------------------------|
|   |      |               | Latest figure   | Change from prior period % | Change from same period prior year % | Latest figure | Change from prior period % | Change from same period prior year % |
| Number of dwelling units(a) (seasonally adjusted)—                                  |      |               |                 |                            |                                      |               |                            |                                      |
| New houses  | No.  | Nov 98        | 2 316           | -1.7                       | -3.9                                 | 8 454         | -1.2                       | -3.4                                 |
| Total   | No.  | Nov 98        | 4 260           | 2.9                        | -4.7                                 | 12 529        | 0.3                        | -5.1                                 |
| Value of new residential building (seasonally adjusted)                             | \$m  | Nov 98        | 521.5           | 11.4                       | 3.7                                  | 1 441.3       | 3.9                        | 4.8                                  |
| Value of alterations and additions to residential building(b) (seasonally adjusted) | \$m  | Nov 98        | 94.4            | 19.2                       | -8.8                                 | 229.3         | -0.5                       | 6.3                                  |
| Value of non-residential building(c) (original)                                     | \$m  | Nov 98        | 461.9           | 47.3                       | 21.4                                 | 1 109.2       | -1.3                       | 11.8                                 |
| Value of all building (original)  | \$m  | Nov 98        | 1 141.6         | 32.4                       | 11.1                                 | 2 848.9       | 3.5                        | 9.1                                  |

<sup>a</sup> Includes dwelling units approved as part of the construction of non-residential building and alterations and additions to existing buildings (including conversions to dwelling units).

<sup>b</sup> Valued at \$10,000 or more. Includes conversions of existing buildings into residential buildings.

<sup>c</sup> Valued at \$50,000 or more.

Source: *Building Approvals, Australia (Cat. no. 8731.0)*

## 9

## BUILDING APPROVALS, NSW

| Period         | Number of dwelling units(a), seasonally adjusted |       |                |       | Value of building approvals |  |                             |              |
|----------------|--|-------|----------------|-------|-----------------------------|--|-----------------------------|--------------|
|                | New houses                                       |       | Total          |       | Seasonally adjusted         |  | Original                    |              |
|                | Private sector                                   | Total | Private sector | Total | New residential building    | Alterations and additions to residential building(b) | Non-residential building(c) | All building |
|                | no.  | no.   | no.            | no.   | \$m                         | \$m  | \$m                         | \$m          |
| <b>1995-96</b> | ..   | ..    | ..             | ..    | ..                          | ..   | 3 650.3                     | 9 168.6      |
| <b>1996-97</b> | ..   | ..    | ..             | ..    | ..                          | ..   | 5 169.2                     | 11 356.6     |
| <b>1997-98</b> | ..   | ..    | ..             | ..    | ..                          | ..   | r5 910.9                    | 13 287.2     |
| <b>1997</b>    |  |       |                |       |                             |  |                             |              |
| September      | 2 181  | 2 186 | 3 844          | 3 961 | 430.3                       | 93.8   | 396.4                       | 958.0        |
| October        | 2 424  | 2 434 | 4 045          | 4 077 | 479.4                       | 108.9  | 520.3                       | 1 123.1      |
| November       | 2 399  | 2 411 | 4 424          | 4 470 | 503.1                       | 103.5  | 380.6                       | 1 028.0      |
| December       | 2 545  | 2 563 | 4 476          | 4 620 | 529.0                       | 119.0  | 286.0                       | 885.8        |
| <b>1998</b>    |  |       |                |       |                             |  |                             |              |
| January        | 2 621  | 2 648 | 4 395          | 4 506 | 450.2                       | 144.0  | 477.0                       | 984.0        |
| February       | 2 451  | 2 482 | 3 635          | 3 767 | 413.4                       | 122.5  | 461.8                       | 943.8        |
| March          | 2 574  | 2 592 | 4 496          | 4 633 | 522.9                       | 112.7  | 386.4                       | 988.9        |
| April          | 2 578  | 2 585 | 4 909          | 5 025 | 577.0                       | 160.4  | 527.0                       | 1 263.2      |
| May            | 2 405  | 2 419 | 3 970          | 4 047 | 463.7                       | 129.4  | 654.7                       | 1 335.0      |
| June           | 2 483  | 2 529 | 5 145          | 5 246 | 588.9                       | 139.1  | 534.3                       | 1 214.8      |
| July           | 2 289  | 2 450 | 4 594          | 4 920 | 564.1                       | 142.5  | 329.9                       | 1 103.2      |
| August         | 2 000  | 2 016 | 3 672          | 3 776 | 465.5                       | 91.3   | 612.0                       | 1 158.0      |
| September      | 2 037  | 2 060 | 3 773          | 3 857 | 416.0                       | 97.2   | 322.9                       | 867.3        |
| October        | 2 348  | 2 357 | 3 983          | 4 138 | 468.0                       | 79.2   | 313.5                       | 862.1        |
| November       | 2 241  | 2 316 | 3 848          | 4 260 | 521.5                       | 94.4   | 461.9                       | 1 141.6      |

<sup>a</sup> Includes dwelling units approved as part of the construction of non-residential building and alterations and additions to existing buildings (including conversions to dwelling units).

<sup>b</sup> Valued at \$10,000 or more. Includes conversions of existing buildings into residential buildings.

<sup>c</sup> Valued at \$50,000 or more.

Source: *Building Approvals, Australia (Cat. no. 8731.0)*

## 10

## TURNOVER OF RETAIL ESTABLISHMENTS(a), NSW AND AUSTRALIA—SEASONALLY ADJUSTED

| Indicator                          | Latest period | New South Wales |                          |                                    | Australia       |                          |                                    |
|------------------------------------|---------------|-----------------|--------------------------|------------------------------------|-----------------|--------------------------|------------------------------------|
|                                    |               | Latest figure   | Change from prior period | Change from same period prior year | Latest figure   | Change from prior period | Change from same period prior year |
|                                    |               | \$m             | %                        | %                                  | \$m             | %                        | %                                  |
| Food retailing                     | Nov 98        | 1 528.5         | -1.5                     | 0.3                                | 4 749.6         | -0.4                     | 5.0                                |
| Department stores                  | Nov 98        | 381.2           | 6.2                      | 9.1                                | 1 097.5         | 8.3                      | 8.5                                |
| Clothing and soft good retailing   | Nov 98        | 294.9           | -5.1                     | 5.7                                | 812.6           | 0.7                      | 10                                 |
| Household good retailing           | Nov 98        | 391.4           | -2.2                     | -2.7                               | 1 219.5         | -2.9                     | -7.1                               |
| Recreational good retailing        | Nov 98        | 221.3           | -1.4                     | 0.5                                | 674.4           | -0.9                     | 6.4                                |
| Other retailing                    | Nov 98        | 395.7           | 0.6                      | -3.7                               | 1 193.6         | 0.8                      | 6.2                                |
| Hospitality and services           | Nov 98        | 851.7           | 5.3                      | 11.1                               | 2 045.1         | 0.1                      | 9.9                                |
| <b>Total value of retail sales</b> | <b>Nov 98</b> | <b>4 064.6</b>  | <b>0.4</b>               | <b>2.8</b>                         | <b>11 792.3</b> | <b>0.3</b>               | <b>5.2</b>                         |

<sup>a</sup> The figures shown are derived from a monthly survey of retail establishments. Excludes motor vehicle, boat and caravan dealers, service stations, smash repairers, tyre and battery retailers, bread and milk vendors, footwear repairers and electrical appliance repairers n.e.c. Retail establishments which do not have employees are excluded from the survey. Turnover includes retail sales, wholesale sales, takings from repairs, meals and hiring of goods; and commissions from agency activity (e.g. commissions received from collecting dry cleaning, selling lottery tickets etc.)

Source: Retail Trade, Australia (Cat. no. 8501.0).

## 11

## TURNOVER OF RETAIL ESTABLISHMENTS(a), NSW—SEASONALLY ADJUSTED

| Period      | Food retailing | Department stores | Clothing and soft good retailing | Household good retailing | Recreational good retailing | Other retailing | Hospitality and services | Total   |
|-------------|----------------|-------------------|----------------------------------|--------------------------|-----------------------------|-----------------|--------------------------|---------|
|             | \$m            | \$m               | \$m                              | \$m                      | \$m                         | \$m             | \$m                      | \$m     |
| <b>1997</b> |                |                   |                                  |                          |                             |                 |                          |         |
| September   | 1 529.3        | 349.3             | 276.9                            | 433.1                    | 225.9                       | 378.7           | 762.3                    | 3 955.5 |
| October     | 1 524.9        | 343.4             | 274.7                            | 421.2                    | 223.0                       | 394.1           | 762.4                    | 3 943.6 |
| November    | 1 524.4        | 349.4             | 279.0                            | 402.3                    | 220.3                       | 410.8           | 766.8                    | 3 952.9 |
| December    | 1 546.0        | 331.9             | 282.0                            | 420.7                    | 226.6                       | 406.8           | 772.2                    | 3 986.2 |
| <b>1998</b> |                |                   |                                  |                          |                             |                 |                          |         |
| January     | 1 560.2        | 367.4             | 267.4                            | 438.8                    | 234.4                       | 398.3           | 760.3                    | 4 026.8 |
| February    | 1 558.1        | 328.7             | 266.5                            | 437.4                    | 224.7                       | 407.0           | 754.4                    | 3 976.9 |
| March       | 1 547.6        | 334.2             | 265.2                            | 444.7                    | 224.0                       | 394.2           | 760.3                    | 3 970.3 |
| April       | 1 515.9        | 354.9             | 269.6                            | 434.1                    | 229.8                       | 405.0           | 762.3                    | 3 971.5 |
| May         | 1 510.2        | 362.3             | 286.9                            | 426.9                    | 221.5                       | 407.7           | 775.4                    | 3 991.0 |
| June        | 1 532.2        | 312.4             | 271.8                            | 422.6                    | 224.5                       | 412.4           | 775.2                    | 3 951.0 |
| July        | 1 514.5        | 395.7             | 281.4                            | 426.9                    | 219.5                       | 406.0           | 801.9                    | 4 046.0 |
| August      | 1 483.1        | 348.5             | 286.4                            | 425.6                    | 205.2                       | 397.3           | 785.4                    | 3 931.4 |
| September   | 1 530.0        | 355.6             | 296.4                            | 416.2                    | 221.5                       | 405.1           | 794.3                    | 4 019.1 |
| October     | r1 552.4       | r358.9            | r310.6                           | 400.4                    | 224.5                       | 393.5           | r808.8                   | r4049.2 |
| November    | 1 528.5        | 381.2             | 294.9                            | 391.4                    | 221.3                       | 395.7           | 851.7                    | 4 064.7 |

<sup>a</sup> The figures shown are derived from a monthly survey of retail establishments. Excludes motor vehicle, boat and caravan dealers, service stations, smash repairers, tyre and battery retailers, bread and milk vendors, footwear repairers and electrical appliance repairers n.e.c. Retail establishments which do not have employees are excluded from the survey. Turnover includes retail sales, wholesale sales, takings from repairs, meals and hiring of goods; and commissions from agency activity (e.g. commissions received from collecting dry cleaning, selling lottery tickets etc.)

Source: Retail Trade, Australia (Cat. no. 8501.0).

## 12

## NEW MOTOR VEHICLE REGISTRATIONS(a), NSW AND AUSTRALIA—SEASONALLY ADJUSTED

| Indicator                                    | Latest period | New South Wales |                          |                                    | Australia     |                          |                                    |
|--|---------------|-----------------|--------------------------|------------------------------------|---------------|--------------------------|------------------------------------|
|  |               | Latest figure   | Change from prior period | Change from same period prior year | Latest figure | Change from prior period | Change from same period prior year |
|  |               | no.             | %                        | %                                  | no.           | %                        | %                                  |
| Passenger vehicles                           | Nov 98        | 19 814          | 7.9                      | 6.6                                | 57 457        | 7.5                      | 5.3                                |
| Other vehicles (excluding motor cycles)      | Nov 98        | 3 398           | 0.7                      | 35.2                               | 11 079        | 6.2                      | 23.4                               |
| Total registrations (excluding motor cycles) | Nov 98        | 23 212          | 6.8                      | 10.0                               | 68 536        | 7.3                      | 7.8                                |

<sup>a</sup> Includes vehicles (other than those of the defence forces) owned by Government departments and authorities. Excludes mobile plant and equipment, tractors, trailers and non-motorised caravans.

Source: *New Motor Vehicle Registrations, Australia, Preliminary (Cat. no. 9301.0)*.

## 13

## NEW MOTOR VEHICLE REGISTRATIONS(a), NSW—SEASONALLY ADJUSTED

| Period      | Passenger vehicles | Other vehicles<br>(excluding motor cycles) | Total<br>(excluding motor cycles) |
|-------------|--------------------|--|-----------------------------------|
|             | no.                | no.  | no.                               |
| <b>1997</b> |                    |  |                                   |
| September   | 18 709             | 2 791                                      | 21 501                            |
| October     | 18 893             | 2 739                                      | 21 633                            |
| November    | 18 584             | 2 514                                      | 21 099                            |
| December    | 19 049             | 2 995                                      | 22 044                            |
| <b>1998</b> |                    |  |                                   |
| January     | 18 053             | 3 012                                      | 21 065                            |
| February    | 18 697             | 3 202                                      | 21 898                            |
| March       | 18 527             | 3 082                                      | 21 609                            |
| April       | 18 913             | 3 363                                      | 22 276                            |
| May         | 18 745             | 3 207                                      | 21 952                            |
| June        | 21 013             | 3 245                                      | 24 258                            |
| July        | 21 482             | 3 315                                      | 24 796                            |
| August      | 19 089             | 3 266                                      | 22 355                            |
| September   | 20 003             | 3 214                                      | 23 217                            |
| October     | 18 356             | 3 375                                      | 21 731                            |
| November    | 19 814             | 3 398                                      | 23 212                            |

<sup>a</sup> Includes vehicles (other than those of the defence forces) owned by Government departments and authorities. Excludes mobile plant and equipment, tractors, trailers and non-motorised caravans.

Note: All figures have been revised as a result of the annual re-estimation of seasonal factors.

Source: *New Motor Vehicle Registrations, Australia, Preliminary (Cat. no. 9301.0)*.

# 14

## ACCOMMODATION ESTABLISHMENTS(a) NSW AND AUSTRALIA—ORIGINAL

| Indicator           | Unit   | Latest period | New South Wales |              |             |               | Australia    |             |  |
|---------------------|--------|---------------|-----------------|--------------|-------------|---------------|--------------|-------------|--|
|                     |        |               | Latest figure   | Change from  | Change from | Latest figure | Change from  | Change from |  |
|                     |        |               |                 | prior period | same period |               | prior period | same period |  |
|                     |        |               | %               | %            |             | %             | %            |             |  |
| Room nights         | '000   | Sept qtr 98   | 3 077.3         | 6.5          | 3.8         | 9 639.4       | 10.5         | 3.5         |  |
| Room occupancy rate | %      | Sept qtr 98   | 57.9            | 2.8          | -1.9        | 58.7          | 7.5          | -1.5        |  |
| Takings             | \$'000 | Sept qtr 98   | 342 102         | 8.0          | 6.2         | 998 062       | 13.3         | 4.5         |  |

<sup>a</sup> Licensed hotels with facilities, motels and guest houses and serviced apartments with 15 or more rooms or units.

Source: *Tourist Accommodation, Australia (Cat. no. 8635.0)*

# 15

## ACCOMMODATION ESTABLISHMENTS(a) SYDNEY AND NSW—ORIGINAL

| Period        | Sydney Tourism Region(b) |                     |         | New South Wales |                     |         |
|---------------|--------------------------|---------------------|---------|-----------------|---------------------|---------|
|               | Room nights              | Room occupancy rate | Takings | Room nights     | Room occupancy rate | Takings |
|               | '000                     | %                   | \$'000  | '000            | %                   | \$'000  |
| <b>1997</b>   |                          |                     |         |                 |                     |         |
| June qtr      | 1 515.1                  | 70.5                | 209 163 | 2 810.3         | 57.5                | 303 313 |
| September qtr | 1 555.0                  | 69.6                | 209 484 | 2 964.9         | 59.0                | 322 065 |
| December qtr  | 1 653.5                  | 73.0                | 235 244 | 3 081.0         | 60.8                | 343 650 |
| <b>1998</b>   |                          |                     |         |                 |                     |         |
| March qtr     | 1 664.9                  | 71.9                | 235 516 | 3 017.3         | 59.8                | 343 248 |
| June qtr      | 1 568.3                  | 66.3                | 216 500 | 2 890.3         | 56.3                | 316 721 |
| September qtr | 1 640.0                  | 66.1                | 222 944 | 3 077.3         | 57.9                | 342 102 |

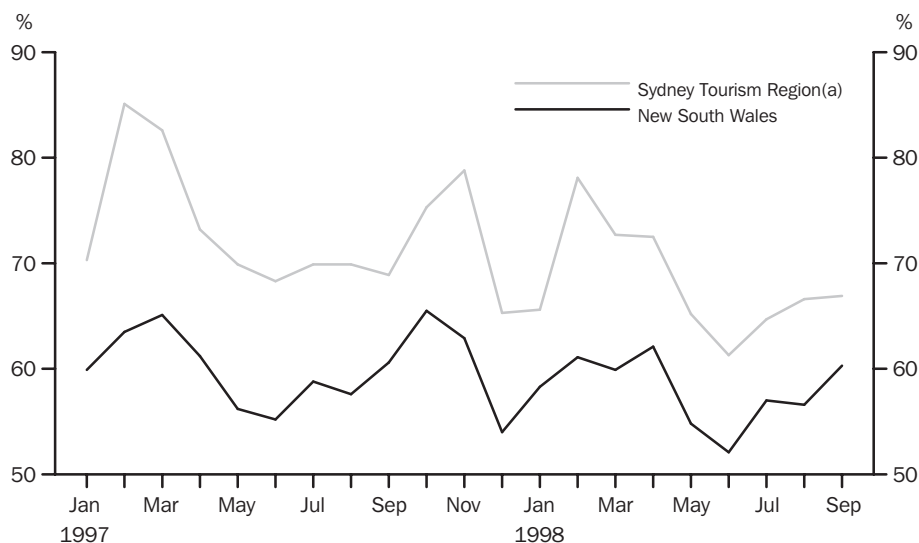
<sup>a</sup> Licensed hotels with facilities, motels and guest houses and serviced apartments with 15 or more rooms or units.

<sup>b</sup> Excludes Gosford, Wyong and Blue Mountains Statistical Local Areas.

Source: *Tourist Accommodation, Small Area Data, NSW (Prod. no. 8635.1.40.001)*

# 16

## ACCOMMODATION ESTABLISHMENTS MONTHLY ROOM OCCUPANCY RATE—ORIGINAL



(a) Excludes Gosford, Wyong and Blue Mountains Statistical Local Areas. Source: *Tourist Accommodation, Small Area Data, NSW (Prod. no. 8635.1.40.001)*

# 17

## CONSUMER AND PRODUCER PRICE INDEXES, NSW AND AUSTRALIA

| Indicator  | Unit           | Latest period | Latest figure | New South Wales            |                                      | Australia(a)  |                            |                                      |
|--|----------------|---------------|---------------|----------------------------|--------------------------------------|---------------|----------------------------|--------------------------------------|
|  |                |               |               | Change from prior period % | Change from same period prior year % | Latest figure | Change from prior period % | Change from same period prior year % |
| Consumer Price Index (all groups)  | 1989-90 =100.0 | Dec qtr 98    | 122.4         | 0.4                        | 1.9                                  | 121.9         | 0.5                        | 1.6                                  |
| Price index of materials used in house building (all groups)                     | 1989-90 =100.0 | Dec qtr 98    | 121.8         | 0.8                        | 2.0                                  | 119.7         | 0.3                        | 1.5                                  |
| Price index of materials used in building other than house building (all groups) | 1989-90 =100.0 | Dec qtr 98    | 115.1         | 0.1                        | 0.8                                  | 115.2         | 0.3                        | 1.1                                  |

<sup>a</sup> For the Consumer Price Index this is the weighted average of eight capital cities and for the other two indexes, the weighted average of the six State capital cities.

Source: Consumer Price Index (Cat. no. 6401.0), Price Index of Materials Used in Building Other Than House Building, Six State Capital Cities (Cat. no. 6407.0), Price Index of Materials Used in House Building, Six State Capital Cities (Cat. no. 6408.0)

# 18

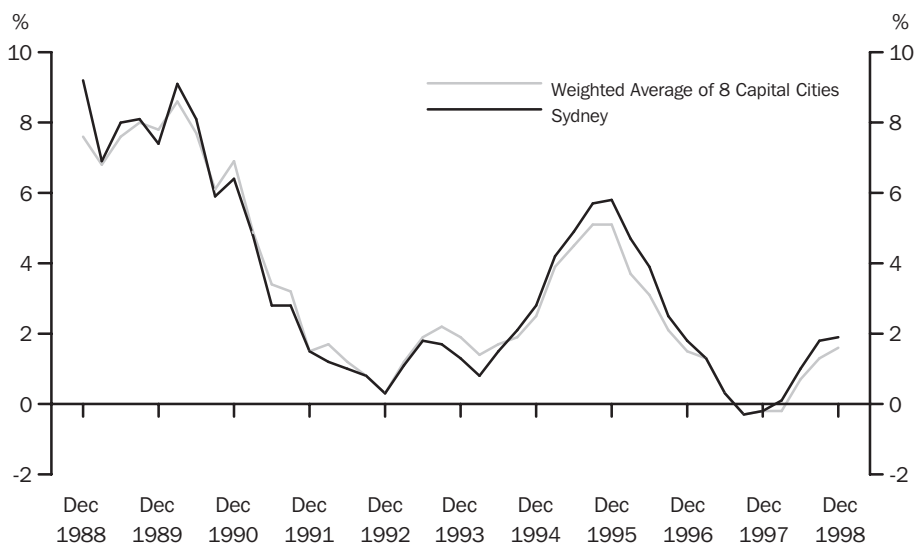
## CONSUMER AND PRODUCER PRICE INDEXES, NSW

| Period        | Consumer Price Index, all groups | Price Index of materials used in house building, all groups | Price Index of materials used in building other than house building, all groups |
|---------------|----------------------------------|---|---|
|               | 1989-90 = 100.0                  | 1989-90 = 100.0   | 1989-90 = 100.0   |
| <b>1997</b>   |                                  |   |   |
| September qtr | 119.8                            | 117.8   | 114.2   |
| December qtr  | 120.1                            | 119.4   | 114.2   |
| <b>1998</b>   |                                  |   |   |
| March qtr     | 120.7                            | 120.8   | 114.4   |
| June qtr      | 121.4                            | 120.7   | 114.8   |
| September qtr | 121.9                            | 120.8   | 115.0   |
| December qtr  | 122.4                            | 121.8   | 115.1   |

Source: Consumer Price Index (Cat. no. 6401.0), Price Index of Materials Used in Building Other Than House Building, Six State Capital Cities (Cat. no. 6407.0), Price Index of Materials Used in House Building, Six State Capital Cities (Cat. no. 6408.0).

# 19

## CONSUMER PRICE INDEX, ANNUAL RATE OF CHANGE



Source: Consumer Price Index (Cat. no. 6401.0)

## 20

## SECURED HOUSING FINANCE COMMITMENTS TO INDIVIDUALS FOR OWNER OCCUPATION, NSW AND AUSTRALIA

| Indicator   | Latest period | New South Wales      |                               |   | Australia            |                               |   |
|---|---------------|----------------------|-------------------------------|---|----------------------|-------------------------------|---|
|   |               | Latest figure<br>\$m | Change from prior period<br>% | Change from same period prior year<br>% | Latest figure<br>\$m | Change from prior period<br>% | Change from same period prior year<br>% |
|   |               |                      |                               |   |                      |                               |   |
| Lending commitments for the construction or purchase of dwellings—            |               |                      |                               |   |                      |                               |   |
| Construction of dwellings   | Nov 98        | 230                  | 3.7                           | 14.2                                    | 713                  | -1.2                          | 8.9                                     |
| Purchase of newly erected dwellings   | Nov 98        | 100                  | 5.9                           | -8.8                                    | 246                  | 6.9                           | 1.3                                     |
| Purchase of established dwellings(a)  | Nov 98        | 1 358                | 11.3                          | 13.3                                    | 3 215                | 10.7                          | 14.3                                    |
| Refinancing of existing dwellings   | Nov 98        | 337                  | 11.3                          | 28.5                                    | 793                  | 10.5                          | 7.3                                     |
| Lending commitments for alterations and additions                             | Nov 98        | 91                   | 6.8                           | -6.7                                    | 219                  | 1.2                           | -6.7                                    |
| Total lending commitments to individuals for housing(b)                       | Nov 98        | 2 024                | 10.1                          | 14.3                                    | 4 967                | 8.6                           | 11.6                                    |
| Total lending commitments to individuals for housing (seasonally adjusted)(b) | Nov 98        | 2 005                | 5.4                           | 10.6                                    | 4 949                | 8.1                           | 7.6                                     |

<sup>a</sup> Excludes refinancing.

<sup>b</sup> Excludes alterations and additions.

Source: *Housing Finance for Owner Occupation, Australia (Cat. no. 5609.0)*

## 21

## SECURED HOUSING FINANCE COMMITMENTS TO INDIVIDUALS FOR OWNER OCCUPATION, NSW

| Period         | Lending commitments for the construction or purchase of dwellings |  |   |  | Lending commitments for alterations and additions<br>\$m | Total lending commitments to individuals for housing(b) |                            |
|----------------|---|--|---|--|--|---|----------------------------|
|                | Construction of dwellings<br>\$m                                  | Purchase of newly erected dwellings<br>\$m | Purchase of established dwellings(a)<br>\$m | Refinancing of existing dwellings<br>\$m |  | Original<br>\$m   | Seasonally adjusted<br>\$m |
|                |   |  |   |  |  |   |                            |
| <b>1995-96</b> | 1 895   | 898  | 10 145                                      | 2 930                                    | 1 262  | 15 868  | ..                         |
| <b>1996-97</b> | 2 117   | 1 234                                      | 12 566                                      | 4 062                                    | 1 221  | 19 979  | ..                         |
| <b>1997-98</b> | 2 625   | 1 280                                      | 14 445                                      | 3 573                                    | 1 174  | 21 973  | ..                         |
| <b>1997</b>    |   |  |   |  |  |   |                            |
| September      | 236   | 116  | 1 210                                       | 322                                      | 103  | 1 885   | r1852                      |
| October        | 224   | 111  | 1 253                                       | 302                                      | 110  | 1 891   | 1 855                      |
| November       | 201   | 110  | 1 198                                       | 262                                      | 98   | 1 771   | 1 813                      |
| December       | 204   | 112  | 1 137                                       | 247                                      | 91   | 1 700   | 1 796                      |
| <b>1998</b>    |   |  |   |  |  |   |                            |
| January        | 169   | 73   | 919   | 238                                      | 81   | 1 398   | 1 860                      |
| February       | 216   | 98   | 1 137                                       | 298                                      | 105  | 1 750   | 1 804                      |
| March          | 239   | 112  | 1 290                                       | 314                                      | 107  | 1 955   | 1 778                      |
| April          | 223   | 107  | 1 305                                       | 285                                      | 95   | 1 920   | 1 885                      |
| May            | 216   | 95   | 1 261                                       | 312                                      | 99   | 1 885   | 1 818                      |
| June           | 262   | 116  | 1 360                                       | 359                                      | 102  | 2 097   | 2 037                      |
| July           | 263   | 123  | 1 284                                       | 376                                      | 97   | 2 045   | 1 827                      |
| August         | 224   | 93   | 1 171                                       | 307                                      | 85   | 1 796   | 1 796                      |
| September      | 242   | 105  | 1 158                                       | 326                                      | 86   | 1 831   | 1 755                      |
| October        | r221  | 95   | 1 220                                       | r302                                     | 85   | r1 838  | r1 902                     |
| November       | 230   | 100  | 1 358                                       | 337                                      | 91   | 2 024   | 2 005                      |

<sup>a</sup> Excludes refinancing.

<sup>b</sup> Excludes alterations and additions.

Source: *Housing Finance for Owner Occupation, Australia (Cat. no. 5609.0)*



|  | <i>Actual</i>          |  | <i>Estimates</i>       |  |
|--|------------------------|--|------------------------|--|
|  | <i>4 months ended</i>  |  | <i>12 months ended</i> |  |
|  | <i>30 October 1998</i> |  | <i>30 June 1999</i>    |  |
|  | <i>\$m</i>             |  | <i>\$m</i>             |  |
| <b>Current receipts—</b>                                       |                        |  |                        |  |
| Stamp duties   | 1 280                  |  | 3 459                  |  |
| Payroll tax  | 1 169                  |  | 3 621                  |  |
| Land tax   | 47                     |  | 945                    |  |
| Motor vehicle taxes  | 359                    |  | 1 002                  |  |
| Gaming and betting   | 452                    |  | 1 440                  |  |
| Commonwealth safety net taxes                                  | 648                    |  | 1 873                  |  |
| Other taxes  | 384                    |  | 1 095                  |  |
| Commonwealth general purpose grants                            | 1 557                  |  | 4 731                  |  |
| Commonwealth specific purpose grants                           | 1 128                  |  | 3 230                  |  |
| Dividends/tax equivalents                                      | 450                    |  | 1 251                  |  |
| Other current receipts   | 410                    |  | 1 202                  |  |
| <i>Total current receipts</i>                                  | <i>7 884</i>           |  | <i>23 849</i>          |  |
| <b>Current payments—</b>                                       |                        |  |                        |  |
| Interest payments  | 397                    |  | 1 276                  |  |
| Superannuation   | 473                    |  | 1 462                  |  |
| Subsidies to non-budget sector—                                |                        |  |                        |  |
| Redundancies   | 21                     |  | 77                     |  |
| Services   | 348                    |  | 798                    |  |
| Departmental payments—   |                        |  |                        |  |
| Redundancies   | 28                     |  | 53                     |  |
| Health   | 1 926                  |  | 5 706                  |  |
| Education  | 1 718                  |  | 5 364                  |  |
| Law and order  | 603                    |  | 1 733                  |  |
| Community services   | 453                    |  | 1 217                  |  |
| Other  | 1 937                  |  | 5 693                  |  |
| Treasurer's advances   | ..                     |  | 125                    |  |
| Less user charges  | -727                   |  | -2 014                 |  |
| <i>Total current outlays</i>                                   | <i>7 177</i>           |  | <i>21 490</i>          |  |
| <b>Current result surplus/deficit(-)</b>                       | <b>707</b>             |  | <b>2 359</b>           |  |
| <b>Capital receipts—</b>                                       |                        |  |                        |  |
| Commonwealth specific purpose grants                           | 259                    |  | 788                    |  |
| Other capital receipts   | 1                      |  | 10                     |  |
| <i>Total capital receipts</i>                                  | <i>260</i>             |  | <i>798</i>             |  |
| <b>Capital outlays—</b>  |                        |  |                        |  |
| Gross fixed capital payments                                   | 760                    |  | 2 841                  |  |
| Capital grants   | 267                    |  | 1 016                  |  |
| Less asset sales   | -340                   |  | -745                   |  |
| <i>Total capital outlays</i>                                   | <i>687</i>             |  | <i>3 112</i>           |  |
| <b>Capital result surplus/deficit(-)</b>                       | <b>-427</b>            |  | <b>-2 314</b>          |  |
| <b>Government Finance Statistics result surplus/deficit(-)</b> | <b>280</b>             |  | <b>45</b>              |  |

<sup>a</sup> Includes Department of Training and Education Co-ordination, Department of School Education, Office of the Board of Studies and TAFE.

<sup>b</sup> Includes Attorney Generals Department, Department of Corrective Services and Police Services.

<sup>c</sup> Expenditure from the Treasurer's Advance is included in the relevant current payments figures.

Source: Financial Statement released by NSW Treasury. Figures may differ from data published in annual ABS publications.

# 23

## ACTUAL PRIVATE NEW FIXED CAPITAL EXPENDITURE, CURRENT PRICES—NSW AND AUSTRALIA, TREND

| Indicator                      | Latest period   | New South Wales |                          |                                    | Australia     |                          |                                    |
|--------------------------------|-----------------|-----------------|--------------------------|------------------------------------|---------------|--------------------------|------------------------------------|
|                                |                 | Latest figure   | Change from prior period | Change from same period prior year | Latest figure | Change from prior period | Change from same period prior year |
|                                |                 | \$m             | %                        | %                                  | \$m           | %                        | %                                  |
| Type of asset—                 |                 |                 |                          |                                    |               |                          |                                    |
| New buildings and structures   | Sept qtr        | 1 151           | 2.2                      | 14.5                               | 3 752         | 4.7                      | 16.3                               |
| Equipment, plant and machinery | Sept qtr        | 2 646           | -0.1                     | 5.4                                | 8 451         | 0.5                      | 4.4                                |
| <b>Total</b>                   | <b>Sept qtr</b> | <b>3 797</b>    | <b>0.6</b>               | <b>8.0</b>                         | <b>12 203</b> | <b>1.7</b>               | <b>7.8</b>                         |

Source: State Estimates of Private New Capital Expenditure (Cat. no. 5646.0)

# 24

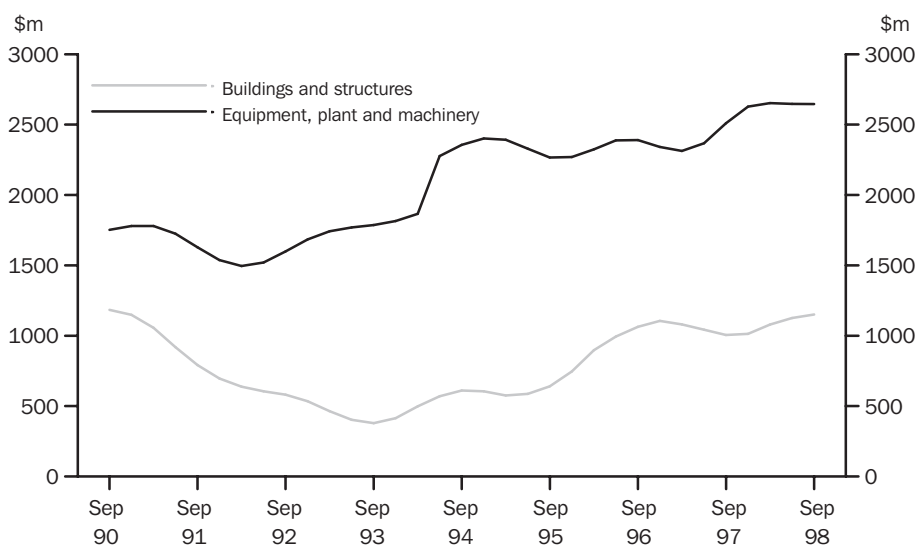
## ACTUAL PRIVATE NEW FIXED CAPITAL EXPENDITURE, CURRENT PRICES—NSW, TREND

| Period        | Type of asset                |                                | Total |
|---------------|------------------------------|--------------------------------|-------|
|               | New buildings and structures | Equipment, plant and machinery |       |
|               | \$m                          | \$m                            | \$m   |
| <b>1997</b>   |                              |                                |       |
| June qtr      | 1 043                        | 2 368                          | 3 412 |
| September qtr | 1 005                        | 2 510                          | 3 515 |
| December qtr  | 1 013                        | 2 628                          | 3 641 |
| <b>1998</b>   |                              |                                |       |
| March qtr     | 1 079                        | 2 653                          | 3 732 |
| June qtr      | 1 126                        | 2 648                          | 3 773 |
| September qtr | 1 151                        | 2 646                          | 3 797 |

Source: State Estimates of New Capital Expenditure (Cat. no. 5646.0)

# 25

## ACTUAL PRIVATE NEW FIXED CAPITAL EXPENDITURE, CURRENT PRICES—NSW, TREND



Source: State Estimates of New Capital Expenditure (5646.0)

| Item  | Latest period | New South Wales      |                               |   | Australia            |                               |   |
|---|---------------|----------------------|-------------------------------|---|----------------------|-------------------------------|---|
|   |               | Latest figure<br>\$m | Change from prior period<br>% | Change from same period prior year<br>% | Latest figure<br>\$m | Change from prior period<br>% | Change from same period prior year<br>% |
|   |               |                      |                               |   |                      |                               |   |
| Overseas imports into NSW                                   | Nov 98        | 3 747                | 1.7                           | 20.9                                    | 8 540                | -5.2                          | 18.9                                    |
| Total overseas exports(c)                                   | Nov 98        | 1 498                | -7.3                          | -10.9                                   | 6 784                | -8.7                          | -7.2                                    |
| Export commodities and SITC(d) code—                        |               |                      |                               |   |                      |                               |   |
| Meat and meat preparations (01)                             | Nov 98        | 84                   | 9.0                           | -5.3                                    | 346                  | -0.9                          | 4.4                                     |
| Cereals and cereal preparations (04)                        | Nov 98        | 78                   | 32.6                          | -47.6                                   | 360                  | 15.8                          | -18.0                                   |
| Wool and other animal hair (268)                            | Nov 98        | 71                   | -3.7                          | -45.7                                   | 220                  | -6.5                          | -45.2                                   |
| Coal, coke and briquettes (32)                              | Nov 98        | 333                  | -6.2                          | 1.7                                     | 764                  | -6.2                          | -2.4                                    |
| Iron and steel (67)   | Nov 98        | 81                   | 19.1                          | -17.8                                   | 108                  | -8.4                          | -30.7                                   |
| Aluminium (684)   | Nov 98        | 91                   | -14.4                         | -11.3                                   | 274                  | 0.3                           | -13.4                                   |
| Office machines and automatic data processing machines (75) | Nov 98        | 26                   | -6.4                          | -49.0                                   | 53                   | -1.0                          | -33.0                                   |

<sup>a</sup> Figures shown are Customs value.

<sup>b</sup> Figures shown are Free On Board (FOB) values.

<sup>c</sup> Excludes re-exported goods.

<sup>d</sup> Standard International Trade Classification Revision 3.

Source: International Trade database

| Period         | Overseas exports of SITC(d) commodities |                                  |  |   |   |                                       |                            |                        |  |
|----------------|---|----------------------------------|--|---|---|---------------------------------------|----------------------------|------------------------|--|
|                | Overseas imports into NSW<br>\$m        | Total overseas exports(c)<br>\$m | Meat and meat preparations (01)<br>\$m | Cereals and cereal preparations (04)<br>\$m | Wool and other animal hair (268)<br>\$m | Coal, coke and briquettes (32)<br>\$m | Iron and steel (67)<br>\$m | Aluminium (684)<br>\$m | Office machines and automatic data processing machines (75)<br>\$m |
| <b>1995-96</b> | 34 917                                  | 16 684                           | 794                                    | 822   | 720                                     | 3 338                                 | 1 037                      | 1 111                  | 638  |
| <b>1996-97</b> | 34 229                                  | 17 730                           | 784                                    | 1 540                                       | 859                                     | 3 426                                 | 968                        | 993                    | 535  |
| <b>1997-98</b> | r38 481                                 | 19 676                           | 922                                    | 1 552                                       | 1 061                                   | 4 048                                 | 1 168                      | 1 226                  | 522  |
| <b>1997</b>    |   |                                  |  |   |   |                                       |                            |                        |  |
| September      | 3 220                                   | 1 669                            | 76                                     | 159   | 102                                     | 351                                   | 59                         | 73                     | 48   |
| October        | 3 388                                   | 1 694                            | 78                                     | 95  | 120                                     | 302                                   | 123                        | 98                     | 45   |
| November       | 3 098                                   | 1 762                            | 89                                     | 149   | 130                                     | 328                                   | 98                         | 102                    | 51   |
| December       | 3 422                                   | 1 839                            | 88                                     | 165   | 116                                     | 384                                   | 89                         | 99                     | 59   |
| <b>1998</b>    |   |                                  |  |   |   |                                       |                            |                        |  |
| January        | 2 945                                   | 1 436                            | 65                                     | 135   | 72                                      | 359                                   | 115                        | 118                    | 37   |
| February       | 2 804                                   | 1 459                            | 75                                     | 115   | 82                                      | 322                                   | 87                         | 82                     | 38   |
| March          | 3 439                                   | r1 503                           | 82                                     | 119   | 73                                      | 301                                   | 99                         | 107                    | 38   |
| April          | 3 070                                   | 1 481                            | 64                                     | 100   | 66                                      | 337                                   | 104                        | 100                    | 37   |
| May            | r3 271                                  | 1 672                            | 82                                     | 97  | 67                                      | 346                                   | 118                        | 109                    | 38   |
| June           | r3 594                                  | 1 643                            | 79                                     | 86  | 49                                      | 366                                   | 118                        | 126                    | 42   |
| July           | r3 771                                  | 1 609                            | 79                                     | 96  | 65                                      | 342                                   | 112                        | 104                    | 41   |
| August         | r3 473                                  | 1 600                            | 69                                     | 87  | 43                                      | 356                                   | 92                         | 99                     | 32   |
| September      | r3 552                                  | r1 631                           | 88                                     | 118   | 59                                      | 328                                   | 95                         | 111                    | 33   |
| October r      | 3 685                                   | 1 523                            | 77                                     | 59  | 73                                      | 355                                   | 68                         | 106                    | 28   |
| November       | 3 747                                   | 1 498                            | 84                                     | 78  | 71                                      | 333                                   | 81                         | 91                     | 26   |

<sup>a</sup> Figures shown are Customs value.

<sup>b</sup> Figures shown are Free On Board (FOB) values.

<sup>c</sup> Excludes re-exported goods.

<sup>d</sup> Standard International Trade Classification Revision 3.

Source: International Trade database

**SELF-HELP ACCESS TO STATISTICS**

*DIAL-A-STATISTIC* For current and historical Consumer Price Index data, call 1902 981 074.  
 For the latest figures for National Accounts, Balance of Payments, Labour Force, Average Weekly Earnings, Estimated Resident Population and the Consumer Price Index call 1900 986 400.  
 These calls cost 75c per minute.

*INTERNET* www.abs.gov.au

*LIBRARY* A range of ABS publications is available from public and tertiary libraries Australia wide. Contact your nearest library to determine whether it has the ABS statistics you require.

**WHY NOT SUBSCRIBE?**

*PHONE* +61 1300 366 323

*FAX* +61 3 9615 7848

**CONSULTANCY SERVICES**

ABS offers consultancy services on a user pays basis to help you access published and unpublished data. Data that are already published and can be provided within 5 minutes is free of charge. Statistical methodological services are also available. Please contact:

| City      | By phone     | By fax       |
|-----------|--------------|--------------|
| Canberra  | 02 6252 6627 | 02 6207 0282 |
| Sydney    | 02 9268 4611 | 02 9268 4668 |
| Melbourne | 03 9615 7755 | 03 9615 7798 |
| Brisbane  | 07 3222 6351 | 07 3222 6283 |
| Perth     | 08 9360 5140 | 08 9360 5955 |
| Adelaide  | 08 8237 7400 | 08 8237 7566 |
| Hobart    | 03 6222 5800 | 03 6222 5995 |
| Darwin    | 08 8943 2111 | 08 8981 1218 |

*POST* Client Services, ABS, PO Box 10, Belconnen ACT 2616

*EMAIL* client.services@abs.gov.au



2130710002990  
 ISSN 1031-8534

RRP \$16.00